



Head Teacher: Mrs J Logue
Chair of Governors: Mr E Connaughton
 St Margaret Mary RC JI School, Perry Common Road,
 Erdington, Birmingham B23 7AB
 Tel: 0121 464 6355
 Email: enquiry@stmgtmry.bham.sch.uk
 Website: www.stmgtmry.bham.sch.uk
<https://bsky.app/profile/stmargaretmaryrc.bsky.social>



Thought for the week:

“It always seems impossible until it is done.”



For disarmament and peace
Let us pray that nations move toward effective
disarmament, particularly nuclear disarmament, and that
world leaders choose the path of dialogue and diplomacy
instead of violence.

27th March 2026

Dear Parents,

This week has been particularly special as **Year 3** made their **Reconciliation**. Thank you to **Fr Simon** and the team for preparing our pupils so thoroughly. It was truly moving to witness the children approach this important **Sacrament** with such **reverence, grace** and **eloquence**. **Year 5** and **Year 2** also celebrated **Mass** this week, marking the final Mass of our Lenten season as we reflected on the **Annunciation of the Lord**. I am grateful to our **readers** and **servers** for their meaningful contributions to our worship.

Throughout this special season of **Lent**, we have celebrated our own **Holy Week** together. I would like to extend my sincere thanks to all our **staff** who prepared such heartfelt and holy **prayer services**, thoughtfully focusing on the stages of the **Triduum** and the **Easter events**. We enjoyed sharing the structure of our liturgies with parents showing that we; **gather, listen, respond** and take on a **mission**. It was a real pleasure to see so many parents and members of our community join us for these services, strengthening the bonds between our **school and parish family**.

Our **Parliament Leads** have done a fantastic job organising our **Cross, Egg, Bonnet** and **Poetry** competition this week. The creativity on display has been absolutely out of this world, and congratulations to all our **winners** and everyone who took part. Today we enjoyed our final festive event—the **Easter Egg Raffle**—and I must thank all our **staff** for generously providing the **wonderful prizes**.

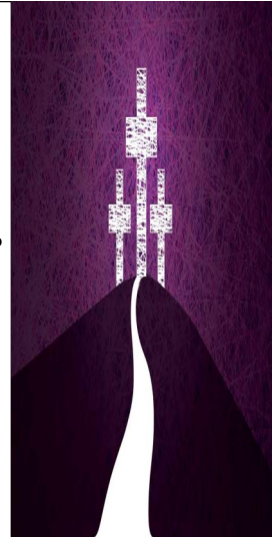
Today, termly **report cards** are going home with your child. These provide an overview of your child's **achievements** across the term, along with suggested next steps and areas for **development** that you may wish to focus on with your children over the coming weeks.

Year 5 had a wonderful visit to our feeder school, **Cardinal Wiseman**, where they enjoyed watching a production of **High School Musical**. It was particularly special to see some of our **former pupils** performing on stage, and we felt immensely **proud** watching them shine

As we approach the new **financial year** on **1st April**, I wanted to take a moment to share an important update regarding our school **meals and milk** provision. I know that many of you, like us, are feeling the impact of the rising **cost of living** and the pressures this places on household budgets across the country. We have worked hard to absorb the increased costs associated with providing nutritious meals and drinks to our pupils. However, pressures have become increasingly difficult to manage without making **adjustments** to our pricing structure. From 1st April, **milk and juice** will now cost **40p** per carton, and our daily school dinner provision will be **£2.95**. We recognise that every penny matters to our families, and we have not taken this decision lightly.

As we move into the **summer term**, a reminder that the **clocks go forward** this weekend. Pupils are welcome to wear **summer uniform** from **Monday 13th April** if they wish—summer checked dresses for the girls and grey shorts with sweatshirts (no ties) for the boys. Finally, I am delighted to share that **Miss McInerney** was safely delivered of a **baby girl** last week. We warmly welcome **Eva-Grace** and wish the family all the very best for the future.

From all the staff at St Margaret Mary's School we wish all our families a happy and holy Eastertide.



Diary Dates

3P and 5M
swimming
Wednesday 15th
April

Mass for Y1 & Y4 in
Church
Wednesday 15th
April 9.15am

No clubs week
beginning 13th
April

Gospel Virtues



Being Intentional and

Prophetic describes a

way of living where

children make

conscious, thoughtful

choices guided by faith

and conscience, and

then set a positive

example for others.

Assembly Awards:	Maths Star of the week	Reading Star of the week	Gospel Virtues
Nursery	Daneen	Louie	Jack
Reception	Dawit & Paige	Leo & Freya	Jason & Noah
Year One	Ebube & Renato	Sosuna & Jennifer	Bitanya & Emily
Year Two	Raei & Kruz	Szymon & Diya	Luella & Eliana
Year Three	Joshua & Devon	Aria & Talia	Patrick & Eden B
Year Four	Wiktorija & Rieon	Adari & Indya	David S & Jotham
Year Five	Jeniyah & Laura	Lillian & Sinon	Benedict & Derick
Year Six	Enoch & Ta'Jae	Marcel & Sana N	Zuzanna & Olivia



Olivia, Nelson, Poppy, April and all children who will be celebrating during the half term.



Many thanks to our Altar Servers, Readers and Offertory helpers in Mass today.

Hanna Z, Tyanah, Derick, Lillian, Ameila Z, Isla A, Efrata T, Lewis, Kaian & Zikora.



Snippet of News

Congratulation to our House winners this term! The results are:

Blue Team: 111,846 Green Team: 111,816
Red Team: 103,044 Yellow Team: 95,592

Attendance Notice Board

It is vital that your child is on time and in school every day, unless there is a medical reason for them not being here. If your child is off school and we haven't seen them, you may receive a visit from myself or a Deputy DSL as part of our Safe and Well checks. Please remember that our children have a right to an education - this is laid out in UNICEF's Article 28 - A Right to an Education.

Our overall attendance: 94%

ATTENDANCE WINNERS THIS WEEK:

EYFS Attendance = 96% Y1 Attendance = 95%
 Y2 Attendance = 99% Y3 Attendance = 90%
 Y4 Attendance = 91% Y5 Attendance = 95%
 Y6 Attendance = 94%

Congratulations to Nursery & 2L their 100% attendance this week!

Article of the Week



Article 26—Social Security



Good attendance at St Margaret Mary means being in school at least 95% of the time [180-190 days]

